



Walkie Pallet Trucks & Stackers

3,300 lb to 6,500 lb Capacity
BWS17S-7/BW23S-7/BWR33S-7





DOOSAN

WARNING
This machine is designed to be used only by trained operators. It is not to be used for any other purpose. The operator must read and understand the operator's manual before operating this machine. The operator must wear the seat belt and use the safety features of this machine. The operator must not drink alcohol or use drugs before operating this machine. The operator must not operate this machine if they are tired or if they are under the influence of alcohol or drugs. The operator must not operate this machine if they are not properly trained. The operator must not operate this machine if they are not wearing the proper safety gear. The operator must not operate this machine if they are not wearing the proper safety gear. The operator must not operate this machine if they are not wearing the proper safety gear.

DOOSAN

WARNING
This machine is designed to be used only by trained operators. It is not to be used for any other purpose. The operator must read and understand the operator's manual before operating this machine. The operator must wear the seat belt and use the safety features of this machine. The operator must not drink alcohol or use drugs before operating this machine. The operator must not operate this machine if they are tired or if they are under the influence of alcohol or drugs. The operator must not operate this machine if they are not properly trained. The operator must not operate this machine if they are not wearing the proper safety gear. The operator must not operate this machine if they are not wearing the proper safety gear. The operator must not operate this machine if they are not wearing the proper safety gear.



We Are Doosan. Respected Name, Strong Ties, Reliable Products.

Doosan, founded in 1896, has evolved into is a multi-faceted corporation employing more than 38,000 people in 33 different countries. This diverse group of highly-skilled individuals have helped make Doosan a dominate presence in the global marketplace.

Doosan offers a wide array of products and services to meet consumers' needs. We are involved in the development of power generation and desalination plants, major construction projects, engine development, and construction equipment manufacturing.

Doosan began producing forklifts almost 50 years ago and today is a successful global player in the material handling industry. We offer over 140 models, produced in four manufacturing plants with a production total of over 400,000 units.

Our goal is to offer simple, powerful, and performance-enhanced products while helping customers achieve their bottom lines. We have won numerous technology design awards which have allowed us to expand our influence worldwide to include a network of over 400 dealers in more than 100 countries.

Doosan remains dedicated to its focus of providing customers with reliable and cost effective material handling products to meet their many operating needs.



Technology That Works

Curtis solid state controllers provide smooth acceleration and seamless directional control. Its **Regenerative Braking** feature adds energy back to the battery to improve efficiency.



Power and Performance

With **AC Power**, you will benefit from faster acceleration, more torque, higher efficiency, and lower maintenance costs due to the brush-less design.





Easy Maintenance

All Doosan Powered Walkie trucks come standard with an **Hour Meter/Battery Discharge Indicator** to keep track of hours used and reserve battery power at a glance.



Operator Friendly

A **convenient storage compartment** is included on our Walkie Rider/Walkie Stacker trucks to hold those items that the operator needs to get the job done.



Ergonomically designed control handle for all day comfort.

GET
MORE
FOR YOUR MONEY

BW23S-7 Walkie Pallet Truck

Low Speed/Brake Override Switch
Allows creep speed operation with handle in the upright position. Increases ability to maneuver in tight spaces.

Hour Meter/BDI
Keeps track of hours used and reserve battery power at a glance.

Dual Lift Cylinders
Increases stability by lifting loads smoothly and evenly.

Standard Battery Pack with Built in Charger
4 Deep cycle batteries and 20 amp built-in charger - 185 AH capacity.

Pallet Entry Rollers
Eases pallet entry and exit.

Poly Drive Tire
Provides longer tire life and has lower energy consumption versus a rubber tire.

Stability Skids
Easily replaceable, polyurethane skids provide stability on uneven surfaces.

CAN Bus Technology
This reduces the number of connections and potential for problems making the system less complicated and more reliable.



BWR33S-7 Walkie Rider Pallet Truck



BWS17S-7 Walkie Stacker Pallet Truck



Built in 20 Amp Charger
Batteries are easily charged in any 110V power outlet.

Three Mast Heights
106", 130" (STD), and 145".
Versatility to meet your application.

Low Speed/Brake Override Switch
Allows creep speed operation with handle in the upright position.
Increases the ability to maneuver in

Roll Out Battery Tray
Allows for easy maintenance, removal, and replacement.

Adjustable Outriggers
Provides ability to handle various loads and applications.

Poly Drive Tire
Provides longer tire life and has lower energy consumption versus a rubber tire.

Adjustable Spring Loaded Caster
Improves truck stability with any load.

CAN Bus Technology
This reduces the number of connections and potential for problems making the system less complicated and more reliable.





Complementary Products

Doosan manufactures a wide range of quality products utilizing the latest technology and safety features.

Doosan's powered Walkie, Walkie Rider, and manual pallet trucks provide excellent mobility and increased return on your investment over larger more expensive units.

Combined with our Electric, LPG, and Diesel powered forklifts, Doosan's forklift products will bring efficiency to your operation, increasing your overall productivity.

SITDOWN FORKLIFTS



4-wheel, LPG cushion tire
3,000 - 6,500 lb capacity



4-wheel, LPG/Diesel pneumatic tire
3,000 - 36,000 lb capacity



3-wheel, Electric cushion tire
2,500 - 4,000 lb capacity



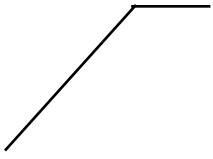
4-wheel, Electric cushion tire
3,000 - 6,500 lb capacity

INCREASED
PRODUCTIVITY



	Application Chart					
Low Level Order Picking			Walkie Rider			
Transporting	Manual Pallet	Walkie Pallet	Walkie Rider	Electric Sitdown	LPG Sitdown	Diesel Sitdown
Storage Stacking		Walkie Stacker		Electric Sitdown	LPG Sitdown	Diesel Sitdown

WALKIE TRUCKS



Manual Pallet Truck
5,500 lb capacity



Walkie Pallet Truck
4,500 lb capacity



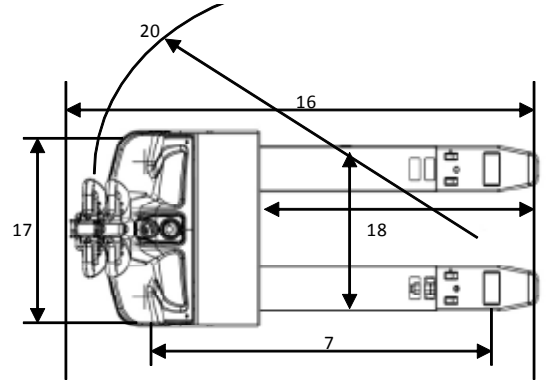
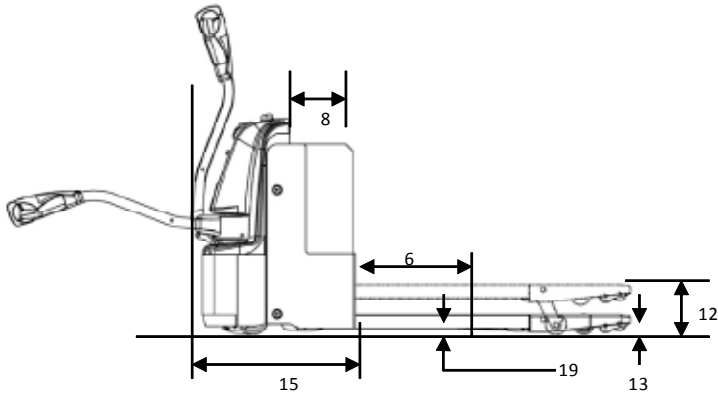
Walkie Rider Pallet Truck
6,500 lb capacity



Walkie Stacker Truck
3,300 lb capacity

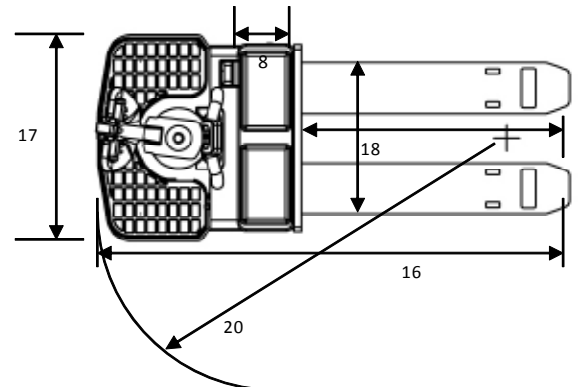
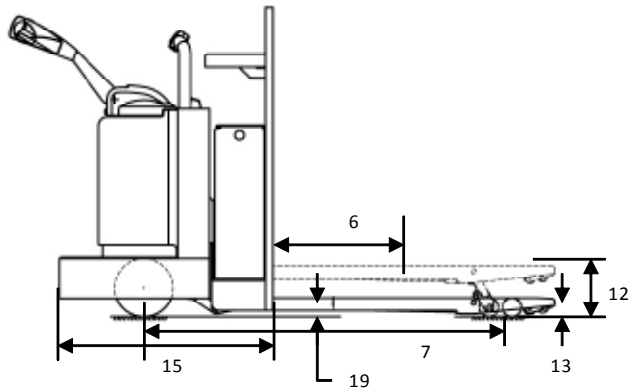


DOOSAN BW23S-7 WALKIE PALLET



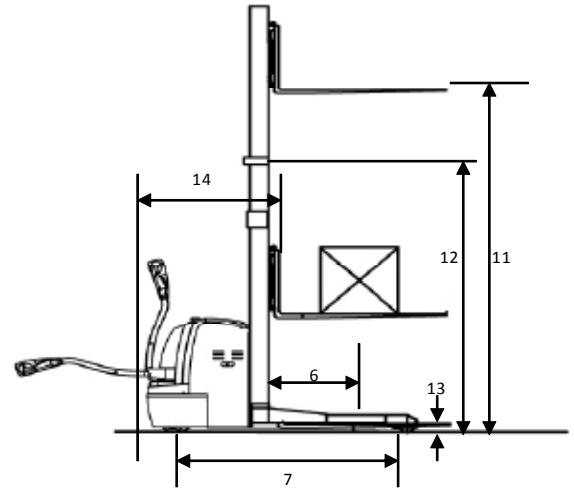
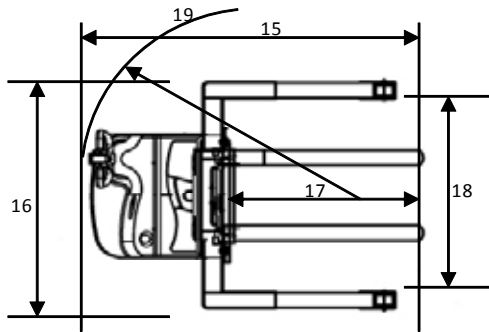
1	Manufacturer		Doosan	12	Max Fork Height	in (mm)	7.95 (202)
2	Model		BW23S-7	13	Fork Lowered Height	in (mm)	3.23 (82)
3	Power		24V Electric AC	14	Recommended Aisle Width	in (mm)	84.05 (2,135)
4	Type		Walkie Pallet	15	Length of Face of Forks	in (mm)	21.85 (555)
5	Capacity @ 24" LC	lbs (kg)	4,500 (2,045)	16	Overall Length	in (mm)	69.88 (1,775)
6	Load Center	in (mm)	24 (600)	17	Overall Width	in (mm)	30.51 (775)
7	Wheelbase	in (mm)	52.4 (1,331)	18	Fork Dimensions	in (mm)	27 x 48 (686 x 1,220)
8	Battery Compartment Length	in (mm)	7.9 (200)	19	Ground Clearance	in (mm)	1.1 (28)
9	Battery Weight	lbs (kg)	375 (170)	20	Turning Radius	in (mm)	64.96 (1,650)
10	Battery Conn/Lead/Position	in (mm)	SB175 Red/B	21	Travel Speed	mph (kph)	3.7 (6.0)
11	Drive Tire	in (mm)	10 x 3 (250 x 70)	22	Service Brake		Electro-Magnetic

DOOSAN BWR33S-7 WALKIE RIDER PALLET



1	Manufacturer		Doosan	12	Max Fork Height	in (mm)	8.66 (220)
2	Model		BWR33S-7	13	Fork Lowered Height	in (mm)	3.23 (82)
3	Power		24V Electric AC	14	Recommended Aisle Width	in (mm)	92.24 (2,343)
4	Type		Walkie Rider Pallet	15	Length of Face of Forks	in (mm)	36.33 (923)
5	Capacity @ 24" LC	lbs (kg)	6,500 (3,000)	16	Overall Length	in (mm)	84.37 (2,143)
6	Load Center	in (mm)	24 (600)	17	Overall Width	in (mm)	36.85 (936)
7	Wheelbase	in (mm)	58.7 (1,491)	18	Fork Dimensions	in (mm)	27 x 48 (686 x 1,220)
8	Battery Compartment Length	in (mm)	13.2 (335)	19	Ground Clearance	in (mm)	1.06 (27)
9	Battery Weight	lbs (kg)	662 (300)	20	Turning Radius	in (mm)	77.16 (1,860)
10	Battery Connection/Lead/Position	in (mm)	SB175 Red/B	21	Travel Speed	mph (kph)	6.8 (10.9)
11	Drive Tire	in (mm)	10 x 4 (250 x 100)	22	Service Brake		Electro-Magnetic

DOOSAN BWS17S-7 WALKIE STACKER

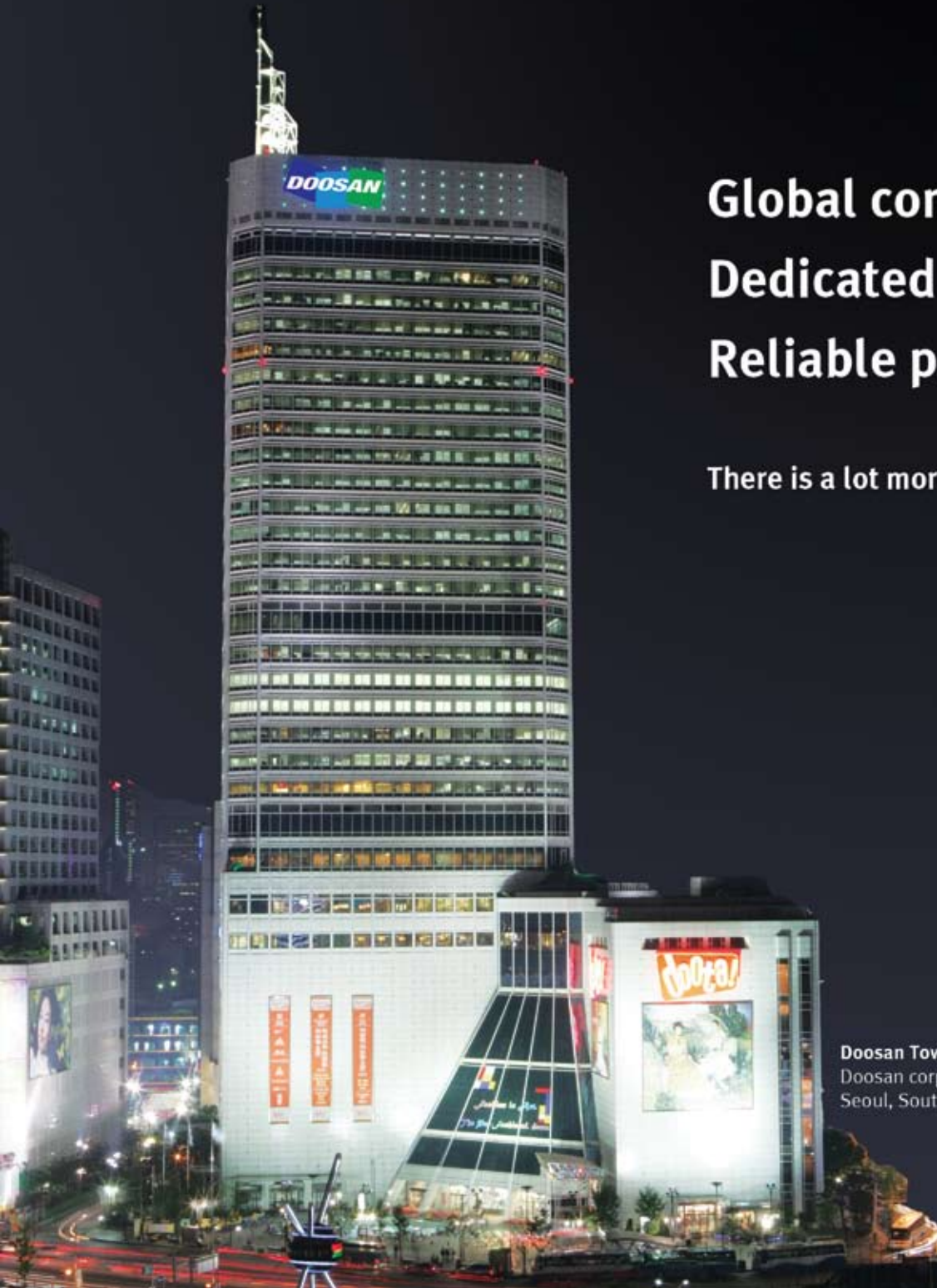


1	Manufacturer		Doosan	12	OAL Height	in (mm)	90 (2,295)
2	Model		BWS17S-7	13	Lowered Fork Height	in (mm)	2 (50)
3	Power		24V Electric AC	14	Length of Face of Forks	in (mm)	34.5 (892)
4	Type		Walkie Stacker	15	Overall Length	in (mm)	76.96 (1,955)
5	Capacity @ 24" LC	lbs (kg)	3,300 (1,500)	16	Overall Width	in	44.96/60.31
6	Load Center	in (mm)	24 (600)	17	Fork Dimensions	in	1.6 x 4 x 42
7	Wheelbase	in (mm)	57.4 (1,460)	18	Base Leg Max I.D.	in (mm)	35 - 51 (889 - 1,295)
8	Service Weight without Battery	in (mm)	2,163 (980)	19	Turning Radius	in (mm)	64.56 (1,640)
9	Battery Weight	lbs (kg)	441 (200)	20	Travel Speed	mph (kph)	3.7 (6.0)
10	Drive Tire	in (mm)	10 x 3 (250 x 70)	21	Service Brake		Electro-Magnetic
11	Lift Height	in (mm)	130 (3,300)				

OPTIONS

	Doosan BW23S-7 Walkie Pallet Truck	Doosan BWR 33S-7 Walkie Rider Truck	Doosan BWS17S-7 Walkie Stacker Truck
AC Drive Motor	STD	STD	STD
AC Power Steer Motor		STD	
Ergonomic Control Handle	STD	STD	STD
Curtis AC Controller	STD	STD	STD
Poly Drive Tire	STD	STD	STD
CAN Bus Technology	STD	STD	STD
Hour Meter/BDI	STD	STD	STD
Low Speed Switch	STD	N/A	STD
Battery Pack with Built in Charger	STD		STD
Pallet Entry Rollers	STD	STD	
48" Load Back Rest	OPTIONAL	STD	OPTIONAL
36" Load Back Rest	OPTIONAL	OPTIONAL	OPTIONAL
60" Load Back Rest	OPTIONAL	OPTIONAL	
Spring Loaded Casters	OPTIONAL	STD	STD
106" Mast Height			OPTIONAL
130" Mast Height			STD
145" Mast Height			OPTIONAL
Operator Storage Compartment		STD	STD
Battery Rollers (Roll Out Tray - BWS)		STD	STD
27" x 48" Forks	STD	STD	
27" x 42" Forks	OPTIONAL	OPTIONAL	
27" x 60" Forks	OPTIONAL	OPTIONAL	
27" x 72" Forks	OPTIONAL	OPTIONAL	
1.6" x 4" x 42" ITA Forks			STD
1.6" x 4" x 45" ITA Forks			OPTIONAL
Torsion Bar Suspension		STD	





**Global company.
Dedicated employees.
Reliable products.**

There is a lot more to Doosan.

Doosan Tower
Doosan corporate office
Seoul, South Korea



Doosan Industrial Vehicle America Corp.
2905 Shawnee Industrial Way
Suwanee, GA 30024
P: 770-831-7700
F: 770-831-2250
E: dia.doosanlift@doosan.com
www.doosanlift.com



Electric Walkie Trucks

BWS17S / BW23S / BWR33S - 7

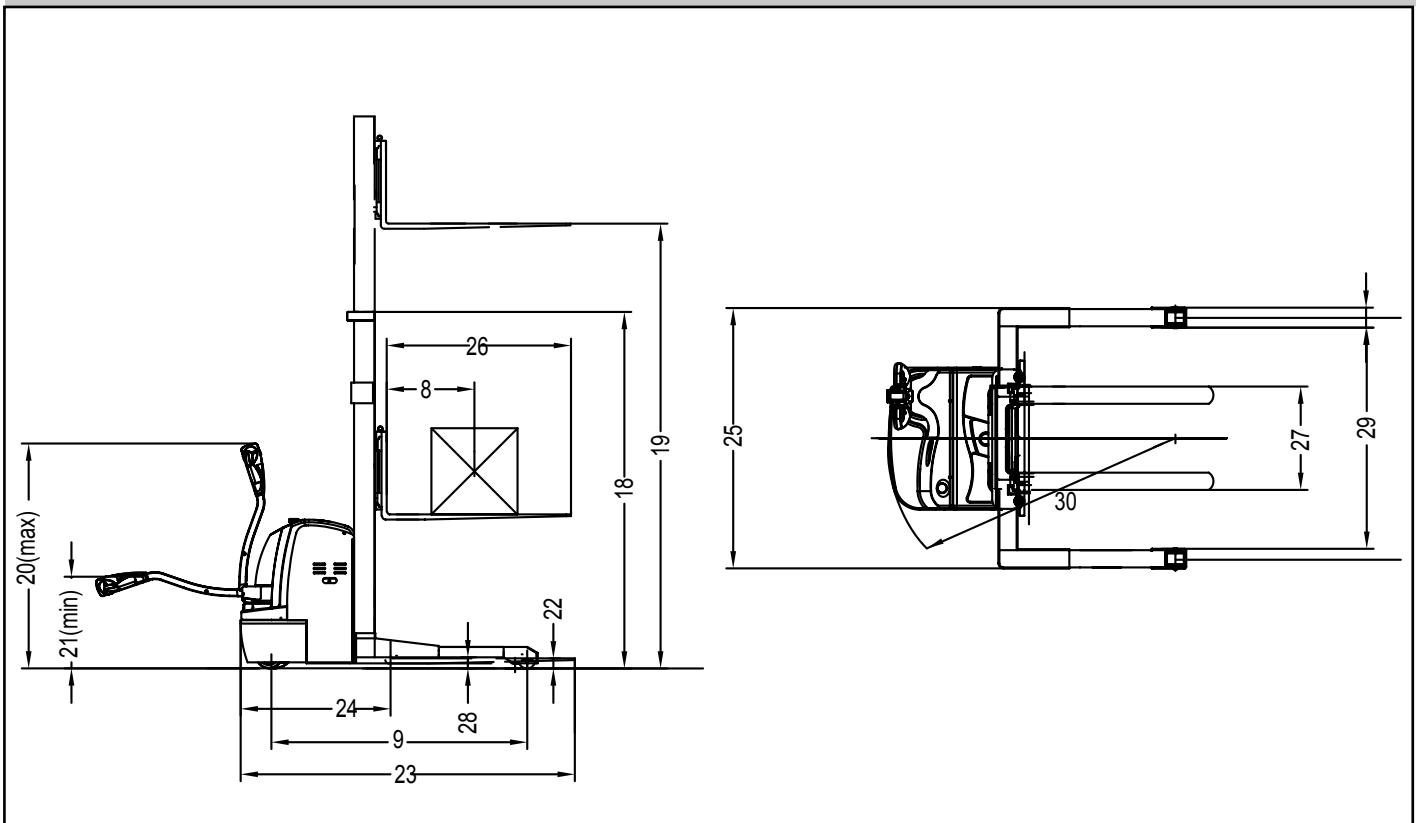
Capacity Range 3300lbs - 6000lbs



SPECIFICATIONS: Walkie Stacker Truck

CHARACTERISTICS	1	Manufacturer		Doosan
	2	Model		BWS17S-7
	3	Power Type		Electric
	4	Operator Type		Walkie Stacker
	5	Load Capacity	lbs (kg)	3300 (1500)
	6	Tire Type (Drive/Load/Caster)	D/L/C	Polyurethane
	7	Wheels (x = driven)	F/R	1 x, 1/2
	8	Load Center	in (mm)	24 (600)
	9	Wheelbase	in (mm)	57.4 (1460)
WEIGHT	10	Total Service Weight (without battery) 130" (3300) Mast	lbs (kg)	2163 (980)
	11	Axle Loading: Loaded (Front/Rear)	lbs (kg)	2582/3200 (1170/1450)
	12	Axle Loading: Unloaded (Front/Rear)	lbs (kg)	1037/331 (470/150)
	13	Battery Weight	lbs (kg)	441 (200)
CHASSIS	14	Tire Compound		Polyurethane
	15	Drive Tire Dimensions	in (mm)	10 x 3 (250 x 70)
	16	Load Wheel Dimensions	in (mm)	3.23 x 6.81 (82 x 173)
	17	Caster Wheel Dimensions	in (mm)	5 x 2.4 (127 x 57)
DIMENSIONS	18	Mast Height Lowered: 130" (3300) Mast	in (mm)	90 (2295) STD
	19	Mast Lift Height	in (mm)	130 (3300) STD
	20	Control Handle Height (Max)	in (mm)	51.18 (1300)
	21	Control Handle Height (Min)	in (mm)	26.38 (670)
	22	Lowered Fork Height	in (mm)	2 (50)
	23	Overall Length	in (mm)	76.96 (1955)
	24	Length to Face of Forks	in (mm)	34.56 (878)
	25	Overall Width - Adjustable Base Legs (Min/Max I.D.).	in (mm)	44.96 / 60.31 (1142 - 1532)
	26	Fork Dimensions	in (mm)	1.6 x 4 x 42 (40 x 100 x 1070)
	27	Overall Fork Width (Min/Max)	in (mm)	35.43 - 51.18 (900 - 1300)
	28	Ground Clearance	in (mm)	1.10 (28)
	29	Adjustable Base Legs (Min/Max I.D.)	in (mm)	35 - 51 (889 - 1295)
PERFORMANCE	30	Turning Radius	in (mm)	65.6 (1640)
	31	Service Brake		Electro-Magnetic
	32	Travel Speed: Loaded/Unloaded	mph (kph)	3.6/3.7 (5.8/6)
	33	Lift Speed: Loaded/Unloaded	fps (mps)	.52 (.16) / .82 (.25)
	34	Lowering Speed: Loaded/Unloaded	fps (mps)	1.2 (.37) / 1.1 (.34)
	35	Battery Voltage Nominal Capacity: K ₅	V/Ah	24/200
	35	Battery Compartment: Rollout Tray Size (775 x 252 x 300)	in	30.51 x 9.94 x 11.81
	37	Control Type		24 AC

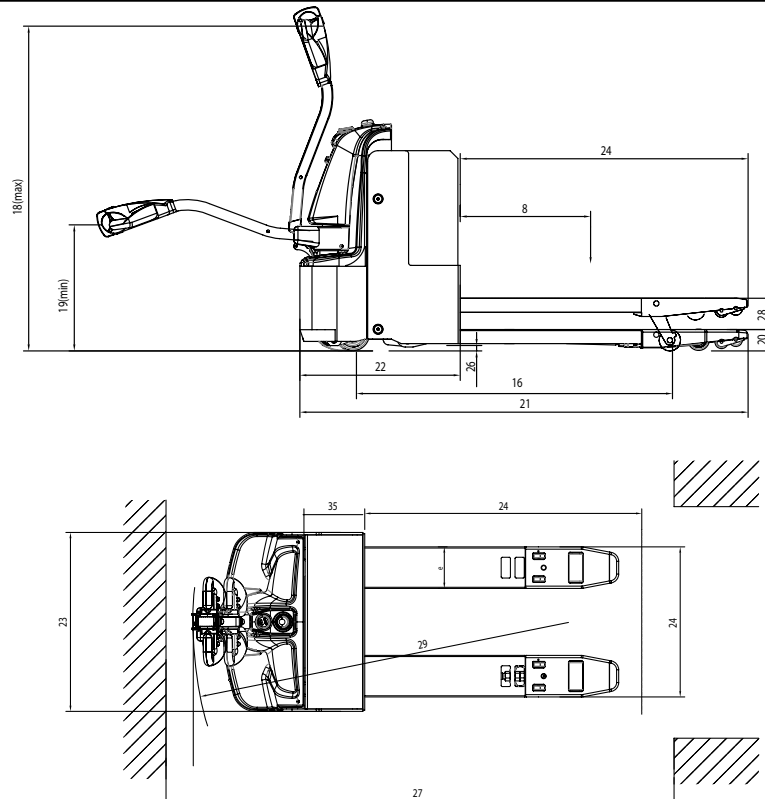
Walkie Stacker Truck



SPECIFICATIONS: Walkie Pallet Truck

CHARACTERISTICS	1	Manufacturer		Doosan
	2	Model		BW23S-7
	3	Power Type		AC Electric
	4	Operator Type		Walkie Pallet Truck
	5	Tire Type (Drive/Load/Caster(Optional))	D/L/C	Polyurethane
	6	Wheels (x = driven) (2 Casters Optional)		1 x (2 OPT) / 2
	7	Load Capacity	lbs (kg)	4500 (2045)
	8	Load Center	in (mm)	24 (600)
WEIGHT	9	Service Weight (without battery) 48" Forks	lbs (kg)	993 (450)
	10	Axle Loading: Loaded (Front/Rear)	lbs (kg)	3200 / 2582 (1450/1170)
	11	Axle Loading: Unloaded (Front/Rear)	lbs (kg)	331 / 1037 (150/470)
	12	Battery Weight	lbs (kg)	375 (170)
CHASSIS	13	Drive Tire Dimensions	in (mm)	10 x 3 (250 x 70)
	14	Load Wheel Dimensions	in (mm)	3.22 x 6.81 (82 x 173)
	15	Caster Wheels Dimensions(Optional)	in (mm)	5 x 2.24 (127 x 57)
	16	Wheelbase	in (mm)	52.40 (1331)
DIMENSIONS	17	Max Fork Height	in (mm)	7.95 (202)
	18	Control Handle Height (Max)	in (mm)	48.4 (1230)
	19	Control Handle Height (Min)	in (mm)	30.7(780)
	20	Fork Lowered Height	in (mm)	3.23 (82)
	21	Overall Length	in (mm)	69.88 (1775)
	22	Length to Fork Face	in (mm)	21.85 (555)
	23	Overall Width	in (mm)	30.51 (775)
	24	Forks (Thickness x Width x Length)	in (mm)	2 x 7 x 48 (54 x 180 x 1220)
	25	Overall Fork Width	in (mm)	27 (685)
	26	Ground Clearance	in (mm)	1.10 (28)
	27	Recommended Aisle Width (40 x 48 pallet)	in (mm)	84.05 (2135)
	28	Lift	in (mm)	4.72 (120)
	PERFORMANCE	29	Turning Radius: Minimum Outside	in (mm)
30		Travel Speed: Loaded/Unloaded	mph (kph)	3.6/3.7 (5.9/6)
31		Lift Speed: Loaded/Unloaded	ft/s (m/s)	1.78/1.98 (.045/.05)
32		Lowering Speed: Loaded/Unloaded	ft/s (m/s)	1.98/1.78 (.05/.045)
33		Service Brake		Electro-Magnetic
34		Battery Connector: Lead - Position	V/Ah	SB175 Red/18/B
35		Battery Compartment Size: W x L x H (648 x 190(218) x 584)	mm	25.5 x 7.5 x 23 25.5 x 8.6 x 23
36		Traction Controller		AC

Walkie Pallet Truck



SPECIFICATIONS: Walkie Rider Pallet Truck

CHARACTERISTICS	1	Manufacturer		Doosan
	2	Model		BWR33S-7
	3	Power Type		AC Electric
	4	Operator Type		Walkie/Rider Pallet
	5	Tire Type (Drive/Load/Caster)	D/L/C	Polyurethane
	6	Wheels (x = driven)		1x, 2/2
	7	Load Capacity	lbs (kg)	6500 (3000)
	8	Load Center	in (mm)	24 (600)
WEIGHT	9	Service Weight (without battery)	lbs (kg)	1898 (860)
	10	Axle Loading: Drive Wheel	lbs (kg)	3002 (1360)
	11	Axle Loading: Load Wheel	lbs (kg)	5518 (2500)
	12	Battery Weight	lbs (kg)	662 (300)
CHASSIS	13	Drive Tire Dimensions	in (mm)	10 x 4 (250 x 100)
	14	Load Wheel Dimensions	in (mm)	3.22 x 6.81 (82 x 173)
	15	Caster Wheel Dimensions	in (mm)	5 x 2.24 (127 x 57)
	16	Ground Clearance @ Center of Wheelbase	in (mm)	1.06 (27)
	17	Wheelbase	in (mm)	58.7 (1491)
DIMENSIONS	18	Lift	in (mm)	5.31 (135)
	19	Max Fork Height	in (mm)	8.66 (220)
	20	Control Handle Height (Max)	in (mm)	54.09 (1374)
	21	Control Handle Height (Min)		40.98 (1041)
	22	Fork Lowered Height	in (mm)	3.22 (82)
	23	Overall Length	in (mm)	84.37 (2143)
	24	Length to Face of Fork	in (mm)	36.33 (923)
	25	Overall Width	in (mm)	36.85 (936)
	26	Forks: Length x Width x Thickness	in (mm)	48 x 9 x 2 (1220 x 230 x 55)
	27	Overall Fork Width	in (mm)	27 (685)
	28	Recommended Aisle Width (40 x 48 Pallet)	in (mm)	92.24 (2343)
	29	Turning Radius: Minimum Outside	in (mm)	81.5 (2070)
PERFORMANCE	30	Travel Speed: Loaded/Unloaded	mph (kph)	6.8 (10.9)
	31	Lift Speed: Loaded/Unloaded	ft/s (m/s)	1.2/1.6 (.03/.04)
	32	Lowering Speed: Loaded/Unloaded	ft/s (m/s)	2.0/1.8 (.05/.045)
	33	Battery Connector - Lead - Position	in	SB175 Red/18/B
	34	Battery Roller Height	in	6.5
	35	Battery Compartment Size (785 x 335 x 803)	in	30.9 x 13.2 x 31.61
	36	Service Brake		Electro-Magnetic
	37	Traction Control		AC
	38	Power Steering Control		AC

Walkie Rider Pallet Truck

